



THE TEXAS CARVER

Newsletter of The Texas Woodcarvers Guild

From the President & Vice-President

Hello Fellow Carvers

Summer is here, school is out and it is time to plan that vacation, visit family and friends and travel. However, we don't want to lose track of the Texas Woodcarvers Guild 2015 Fall Extravaganza in October.

The October 11 – 18 event will be the last planned fall event. The board has chosen to go to one event a year in the spring. The 2016 Spring Round-Up will kick off the once per year combined Seminar, Show and Competition.

Remember if the newsletter and website content differ **the website is the latest information and the final word on status for event details**. We can update and correct errors on the website. However, once the newsletter is released its content is static.

If you have not done so already please go to the website and review the seminar offerings and register early for your preferred choices. We highly recommend you register ON-LINE and receive immediate confirmation of your seminar selection. Remember, if you register ON-LINE you must pay ON-LINE. Registering and paying ON-LINE confirms your selection and paying ON-LINE secures your selection. At the same time you can pay your dues and order banquet tickets. Avoid the line and delay at the Registration desk.

Also, don't forget to attend the Banquet, Business meeting and Raffle. Please donate your items for the raffle. This is an important fund raiser for the Guild.

We have 20 Instructors that are eager to conduct seminars from 1 day to 5 days. Two new instructors, Dylan Goodson and Bill Killian will be sharing their talents with us. Dylan will be offering a choice of realistic human figures or a relief scene. The realistic figure will be a Swordsman and the relief, a carving of a Farm House. Bill Killian will be offering a 10" Crappie utilizing power carving. Both seminars are 5 days. Both instructors are award winning, as are many of our instructors.

We also welcome back the other instructors have been with us before. Some are offering new projects and fresh carving tips

See you in October.

Regards,

Dan Gillen: TWG President

Larry Miller: TWG Vice President

Guild 2016 Spring Elections

As we move to a single TWG event per year we have adjusted terms for several officers and directors to synchronize the spring transfer of office holders. The officers and directors whose terms expire at the Guild 2016 spring event are the following.

Vice President

Secretary

Membership Director

Seminar Director

Special Events Director

Joe Gallio and Joe Perkins have agreed to run for a second term at their current positions Seminar Director and Special Events Director respectively. Helen Havemann is running for the office of Secretary and Jen Laughlin is running for Membership Director. We are still looking for candidates to replace Larry Miller as Vice President. Please let us know if you or someone you know is willing to serve as Guild Vice President.

Job responsibilities for open positions are included below.

Vice president

Instructor recruiting, registration, scheduling and

Seminar description and schedule

Seminar floor layout

Input into Newsletters

Monitor and manage the seminar registration desk

- Monitor and verify online registration
- Document Fee collection
 - Event registration
 - Banquet Tickets
 - Member Dues Payments
 - Show Tables
- Resolve Registration Issues
- Process mail-in registrations

Prepare for Events

- Floor layout and table assignments
- Instructor Seminar lists
- Event badges

Event Operation

- Instructor/vendor area assignments
- Instructors meeting (after setup)
- Register of walk-in students
- Instructor recruiting for next event

Secretary

Maintain Membership information in Website database

Assist members with website activities

Oversee status of members' dues

Send reminders to members with expired dues
Attend Board meetings, take and transcribe minutes
Email Minutes to Board and Staff Members
Maintain documents and records
Maintain Policy and By-Laws Manual
Create Reports from Website database as needed
Assist Officers and Staff as needed
Assist with Events as needed

Seminar – Director

The Seminar Director is the assistant to the Vice President. The Seminar Director shall shadow the Vice President and help in any way possible. The Vice President controls the level of involvement of the Seminar Director. The duties and responsibilities include but are not limited to the following:

- Read, review and contribute to all seminar communication and documents.
- Understand in detail the Vice President processes and procedures for seminar planning, setup, and management.
- Be prepared to step in and perform some or all seminar planning, setup, and management (with the help of other Board members) in the event the Vice President is unable to perform his/her responsibilities.
- Recruit Non-Carving instructors and manage the Non-Carving instruction program in coordination with the Carving Seminar program. This includes but is not limited to enlisting instructors, acquire seminar detailed descriptions, and integrating registration with carving seminar registration.

Membership Director

The Membership Director is responsible for addressing membership and member support. Duties and responsibilities include but are not limited to the following:

- Seek to grow Guild membership.
- Provide an interface to Guild Affiliated clubs.
- Act as member liaison to Guild website and Social media communication.
- Assist the President in forming nominating committees for each Guild election and support the nominating committee in performing their duties.
- Develop and manage youth programs for the Guild.

Special Events Director

The Special Events Director is responsible for assisting the President and Vice President in filling event chairperson positions for major Guild events including but not limited to Carving shows, Carving Competitions, Whittling Contests, Auctions, and Raffles. Duties also include support of the event chairperson planning, and managing each event. The Special Events Director interfaces with, supports, and backs up the Hospitality Chairperson.

The election will be held at the 2016 spring event. Additional nominations from the floor will be accepted prior to the election. Here are biographies of members running for office.

Vice President - TBD

Helen Havemann – Secretary



Helen lived in Houston, Texas most of her life. She attended the University of Texas at Austin and trained in Medical Technology at Ben Taub hospital in Houston. She worked in various hospital laboratories performing tests on patients; her final job was Laboratory Manager, Transfusion Medicine, at U.T. M. D. Anderson Cancer Center in Houston. Helen began wood carving in 2007 after encouragement from Shelley Key. She then joined the Houston Area Woodcarvers and the Texas Woodcarver's Guild and met many wonderful people who assisted her in improving her carving. After moving to Lockhart, Texas, she joined the Central Texas Woodcarvers in Austin, another great group. Besides the fun of carving, she believes the best thing about wood carving is the nice people you meet.

Joe Gallio - Seminar Director



Joe grew up in Beaumont Texas and has lived in Texas ever since. However, Joe's career has sent him to many countries.

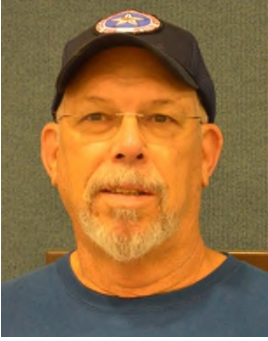
Joe is has been working in the high tech industry for 40+ years. Joe as worked at such companies as Texas Instruments, Tandem Computers and now retired from IBM. Joe has a BS in Electrical Engineering and Masters of Science from Lamar University and University of Houston Clear Lake.

Joe has been a woodworker since his early years starting as a kid and more serious after graduating from college and purchasing his first major equipment, a Shop Smith, in 1984. Now Joe has a shop with much more equipment and tools.

Joe started wood carving about 7 years ago when Jake Heugel conducted a class at Woodcraft in which Joe made a boot and dog and the rest is history. He has the "only one tool you'll ever need" plus about 60 more than you'll ever need. Joe now works part time at Woodcraft in Austin where you may find him still helping new carvers getting started.

Joe has participated in the Fredericksburg, Kerrville and the New Braunfels classes ever since. Joe is currently serving as the Seminar Director of the Texas Woodcarvers Guild (TWG). Joe is looking forward to serving a second term as the Seminar Director.

Joe Perkins – Special Events Director



Joe began woodcarving in the early 90's and joined TWG shortly after. He is currently a member of the Houston Woodcarvers Club. His primary interest is St. Nicks. Joe is currently the TWG Special Events Director and is running for a second term.

Jenifer Laughlin – Membership Director



Jen currently lives in Plano, TX with her husband, Jay, they are both professors in the Dallas County Community College District. She learned how to carve from her grandfather in 1999 and began attending the TWG events since 2000. She has stuck with carving while she got her BS and ME in Math from the University of Houston in Victoria.

She began working with the TWG Raffle early on and is currently the Raffle Chair for TWG as well as the Facebook Administrator. Jen has been an active member of the North Texas Woodcarvers guild, having previously held many leadership positions in the guild.

She is looking forward to many more years in the guild. Jen enjoys relief carving, but is taking a variety of classes to try a bit of everything.

SCHEDULE OF ACTIVITIES

FALL EXTRAVAGANZA OCTOBER 11 – OCTOBER 18, 2015 NEW BRAUNFELS CIVIC/CONVENTION CENTER NEW BRAUNFELS, TX

SUNDAY, Oct. 11

8:00 - 9:00 AM TWG Staff Setup
9:00 - 12:00 AM Instructors & Vendors Set Up
1:00 - 4:00 PM Registration, Sign in & get Name Tags
4:00 PM Instructors Meeting
PLEASE BRING YOUR RAFFLE ITEMS TO THE REGISTRATION DESK
Coffee & donuts available daily (Please feed the kitty).

MONDAY, Oct. 12

Please be prompt on the first day to secure a spot in the seminar.
Sign Up for Mini Seminars at Registration Desk or Show Up at Hill Country RV Rec Room.

Have You Ordered Banquet Tickets?
Stop at the Registration Desk.

7:00 - 7:30 AM ONLY Instructors, Vendors & TWG Staff
7:30 AM Doors Open
7:30 - 8:30 AM Registration, Sign In & Get Name Tags
8:30 AM - 4:30 PM Seminars in Session
9:00 AM Non-Carvers Welcome & Get Acquainted (Civic Center Stage)
4:30 PM Seminars End, Please Clean Table & Sweep
5:00 PM Building Closed
7:00PM Mini-Seminars at Hill Country RV Rec Room

TUESDAY, Oct. 13

Last Chance to Order Banquet Tickets at the Registration Desk – Before noon

8:30 AM - 4:30 PM Seminars in Session, Please Clean Table & Sweep
5:00 PM Building Closed
7:00 PM Board Meeting at Hill Country RV
7:00 PM - 9:30 PM Mini-Seminars at Hill Country RV Rec Room

WEDNESDAY, Oct. 14

8:30 AM - 4:30 PM Seminars in Session, Please Clean Table & Sweep
5:00 PM Building Closed
7:00 PM - 9:30 PM Mini-Seminars at Hill Country RV Rec Room

THURSDAY, Oct. 15

8:30 AM - 4:30 PM Seminars In Session
5:00 PM Building Closed
5:30 PM Banquet Doors Open, at Hill Country RV Rec Room
6:00 PM Dinner, Business Meeting & Raffle at Hill Country RV Rec Room

FRIDAY, Oct 16

8:30 AM - 4:30 PM
4:30 PM

Seminars in Session
Event Ends, Please Clean Tables & Sweep

**TEXAS STATE CHAMPIONSHIP
SHOW - COMPETITION - SALE**

FRIDAY, Oct 16

5:00PM - 6:00PM
6:00 PM - 7:00PM

Show and Competition Set-up, Pick-up Exhibit Packets
Exhibit Table setup begins, continues at 7:30 AM Saturday

SATURDAY, Oct 17

8:00 AM – 9:00 AM
9:00 AM
10 :00 AM - 4:00 PM
5:00 PM

Competition Entries Accepted and Positioned
Judging Starts
Show Open to Public
Building Vacated and Secured

SUNDAY, Oct 18

11:00 AM - 4:00 PM
4:00 PM
6:00PM

Show Open to Public
Show Ends
Building Vacated

**Texas Woodcarver's Guild
2016 Event Schedule**

Plan **NOW** to attend!
All events are held at the

**New Braunfels Civic / Convention Center
375 S. Castell
New Braunfels, TX 78130**

**2016
Spring Round-Up, May 1 – 8
Registration: May 1
Seminars: May 2 - 6
Show: May 7 – 8**

Accommodations

Motels:

The facilities that are listed below are only a few of the many facilities that are available in the NB area. You are, of course, able to canvas the others to see if better rates are available. The listed motels are not necessarily recommended, they are simply the ones that responded with good rates when asked. All rates are pre-taxes and fees. Understand that to get these rates each facility has blocked out a number of rooms at those rates for The Texas Woodcarvers Guild. These blocks will automatically be canceled 30 days prior to the event so you need to get reservations in well in advance. If the block is filled, it is at the discretion of the facility as to whether they honor the stated rate on other rooms. In any case TWG has no influence in rates or changes as they may come about.

Faust Hotel, (European style hotel, walking distance of Conference center). 240 S. Seguin, 830 625 7791.

Room rates range from \$69 - \$189, depending on room style, day of the week, and season. By setting up a courtesy room block with us, we are able to offer TWG members a \$10 discount per night on one night reservations and a \$20 discount per night on two night reservations.

Guests may make reservations by phone at 830-625-7791, or online at www.fausthotel.com. When calling for reservations, please tell them you are with the WOODCARVERS October 2015 group to receive the discounted room rate. Should you choose to book your room online, please indicate you are with the WOODCARVERS October 2015 group in the "Questions" box at the end of the reservation process. Faust Hotel will discount the room rate before you check in on your arrival date.

Ramada Inn, 2 Queen beds or 1 King bed \$59.95. 1051 IH-35 North, 830 625 8017.

Super 8, 1 King or 2 Queen beds \$59.99 Sun. - Thurs., \$89.99 Fri & Sat. 510 S. State Hwy 46, 830 629 1155

Executive Inn, 2 Queen Beds \$49.99, 808 S. State Hwy 46, 830 625 3932.

Sleep Inn, 2 Queen beds \$75 Sun – Thurs, \$139 Fri - Sat. 1477 IH-35 North, 830 625 7700

Wingate by Wyndham offers guest rooms with two queens or a king size beds, refrigerators, microwaves, complimentary high speed Internet, complimentary hot breakfast bar, indoor pool and whirlpool, fitness center and 100% non-smoking facility Weekdays \$79, Friday and Saturday \$109, 245 FM306. Reserve online at <http://www.wingatehotels.com/> or call 1-800-337-0077

Fairfield Inn & Suites Marriott, 2 Queen beds or 1 King \$99 1465 IH 35 North, 830-626-3133

Make your reservations in a timely manner and mention "The Texas Woodcarvers Guild" for rates listed here.

Hill Country Cottage and RV Resort - Fall 2015 Rates

Special arrangements have been made with Hill Country Cottage and RV Resort, 131 Rueckle Road. (.2 miles east of IH-35 at exit 184). RV rates at this facility will be determined on a sliding scale based

on the number of sites TWG members rent. You will be charged \$35 to hold a reservation. The actual rate will be determined and settled when you check out after your stay. We will pay \$28 per night if TWG has 65 or more sites rented, \$31 per night if we have 50 – 64 sites rented, or \$35 per night if we have 10-49 sites rented. This rate will be good for 3 days prior to and 3 days after the event. Included in this rate is free cable TV and Wi-Fi.

Hill Country Cottage and RV Resort is also making 50 cabins available for TWG members. The rates on these cabins are at rates below their off season rates and are quoted on full week occupancy. There are daily rates available which are higher than weekly rates. It must be understood that if a reservation is made for a week and you do not stay for the full week there will be no refund for the unused portion. If you wish to stay more than a week the additional days will be charged at the average rate/day for the unit you reserved.

Available units and rates:

Model	Accommodation	Daily Rate	Weekly Rate 7 Nights
Pecos, Pecos Deluxe	1 room, Queen bed	\$55	\$330
Blanco, Llano, or San Marcos	Small 1 BR With kitchen	\$75	\$450
Guadalupe/Guadalupe Deluxe	Large 1 BR with kitchen	\$85	\$550
Comal or Frio	Reg. 2 BR with kitchen	\$135	\$750
Frio Deluxe or Colorado Apt.	Large 2 BR with kitchen	\$175	\$850

It is strongly recommended that reservations be made as soon as possible to insure, in the case of the cabins, that there is availability. Hill Country has blocked 50 RV spaces near the club house for TWG. When those are filled you may be parked away from the group in spaces as available. Remember to state that you are with the "Texas Woodcarvers Guild" when you make reservations. Hill Country Cottage and RV Resort, 131 Rueckle Road, New Braunfels, TX 78130. www.resortnb.com 830-625-1919.

Membership in the Guild is \$20 per year per family.
Guild's mailing address: Texas Woodcarvers Guild, 13118 Boomer Lane, Austin, TX 78729
 Please send all address changes to this address

2015 Texas State Carving Championship and Show

**New Braunfels Civic/Convention Center
New Braunfels, Texas
October 17 - 18, 2015**

In addition to the categories we added to last year's show, we will add another one to this year's Open Division. This special category will be comprised of finished carvings of Chris Hammack's Bar Fly Rough Outs. Entries will be judged on:

- Workmanship
- Detail
- Originality
- Quality of Finish
- Overall impact of Carving

For this category only, no entry fee will be required to enter. All you have to do is purchase one of Chris' rough-outs and carve it. There are no limits on how many you may enter either. A trophy will be awarded to the winner of the best overall carving submitted. This trophy will be a casting of original trophy hand carved by Chris and will feature a bar fly on the top.

Rough outs can be purchased at Chris Hammack's website: <http://chrishammackart.com/roughouts-and-study-castings/>

Space Requirements

We are leaving the exhibitor table layout design as it was last year. With more space between tables, we seemed to be less cramped and heard no complaints from exhibitors.

Staging of Show Entries

Entries will be displayed on Saturday and Sunday in the center of the Convention Center. As you will recall, we staged carvings there last year. This provided a good viewing area for all to have a close up view.

Look for Show Set-up Schedule

Last year, Show Set-Up went very smooth and most Exhibitors completed their table set up Friday evening. We will follow the same process this year. That is... Seminar Instructors will need time to close down and have the opportunity to be out of the way before we begin set up for "The Show". Check the show set-up schedule details in the Newsletter and at the Seminar.

Show Rules

See TWG website for the current competition rules.

Divisions and Categories

Novice	Intermediate	Open
100 – Caricature	200 – Caricature	300 – Caricature
105 – Animals	205 – Animals	305 – Animals
110 – Realistic	210 – Realistic	310 – Realistic
115 – Birds	215 – Birds	315 – Birds
120 – Aquatic	220 – Aquatic	320 – Aquatic
125 – Relief	225 – Relief	325 – Relief
130 – Chip Carving	230 – Chip Carving	330 – Chip Carving
135 – Pyrography	235 – Ornamental	335 – Ornamental
140 – Santa & Mythical	240 – Santa & Mythical	340 – Santa & Mythical
145 – Plants & Flowers	245 – Religious	345 – Religious
150 – Canes & Walking Sticks	250 – Miniature	350 – Miniature
155 – Other	255 – Pyrography	355 – Pyrography
	260 – Plants and Flowers	360 – Plants and Flowers
	265 – Canes & Walking Sticks	365 – Canes & Walking Sticks
	270 – Woodturning that is carved	370 – Woodturning that is carved
	275 – Other	375 – Instructor Assisted
	280 – Instructor Assisted	380 – Roughout
		385 – Stylized
		390 – Doll
		395 – Found Wood
		400 – Other

Questions, Concerns or Suggestions

Call me on 512-793-2501 or email me at jazubkus@att.net

Jon Zubkus Show Chairman – TWG

USPS MAIL IN REGISTRATION
2015 FALL EXTRAVAGANZA - SEMINARS: OCTOBER 12 - 16

Name of Carver _____
 Name for Additional Badge, (if attending - full name) _____
 Address _____ City _____ St. _____ Zip _____
 Phone _____ Membership: Current _____ Renewing _____ New _____
 E-mail (for confirmation) _____
 TWG Affiliated Home Club, if requesting a free table _____

- Seminar Fees are paid to the Instructor at the Start of each Seminar.
- Enter a Seminar Number for your First, & Second Choice for each Day You Plan to Attend.

Day	Monday	Tuesday	Wednesday	Thursday	Friday
First choice					
Second choice					

- Include with this Form, Your Registration Fee, Dues (if due), Banquet Tickets order/fee, and Show table order/fee.

YOU MUST BE A REGISTERED TWG MEMBER TO PARTICIPATE,

Mail to: Larry Miller 2204 High Meadow Dr. Denton, Texas 76208-7500 Twgvp2015@gmail.com	Family Registration \$20.00	\$20.00	
	(\$25.00 at Door)		
	Family Dues \$20.00 a Year		
	Banquet Tickets \$15.00 each X number desired		
	Exhibitor Show tables \$30 each, Club table 1 st free, additional \$30 ea.		
Total Enclosed			Check #
Make Check Payable to TWG			

TEXAS WOODCARVERS GUILD RELEASE

In consideration for being able to participate in Texas Woodcarvers Guild sponsored events and activities, the named registrant(s) agree to hold harmless the Texas Woodcarvers Guild Board members, the New Braunfels Civic/Convention Center and employees from any and all claims for loss, damage or injury to property or person, for any cause whatsoever occurring during an event. Registrant acknowledges and assumes responsibility for any minor in his/her care. By applying, I acknowledge that I have read and agree to the terms of participation.

Signature: _____ Date _____

For more information and the latest news, seminar, and show information go to: **www.texaswoodcarversguild.com**

SEMINAR INFORMATION

2015 FALL EXTRAVAGANZA

INSTRUCTORS AND SEMINAR DESCRIPTIONS

BATTE, GARY



CHRISTMAS SHELF ELF

Skill Level: Intermediate, Advanced

Gary is offering a 2 day carving seminar featuring his newest caricature project a "Christmas Shelf Elf" This Elf's overall height is 5 3/4" and will be finished just in time for Christmas. 2 day seminar cost is \$90. Blank cost \$20. You will need a safety glove, palm tools, a knife, pencil, measuring device, and a lamp is recommended. For more information contact Gary at: gabatte@embarqmail.com, or 254.968.8793. Find out about Gary and check out his work at: www.cca-carvers.org. Student max 10

1DE Thu, Fri Shelf Elf \$90 + blank



BORG, DAVID



DRAGONS AND CRITTERS

Skill Level: BIA

David is offering 2, two day carving seminars and a one day painting seminar. He has several Dragon and Critter roughouts, character options and textures to choose from.

You will need knives, gouges and standard hand tools. You have the option of texturing using several options, standard hand tools, power tools, or woodburning. Bring your rotary tool, dust collector and woodburner, if you intend to use them for texturing. If you don't have either, a few will be available from the instructor. However, this is NOT a power carving seminar. This seminar will allow you to learn new techniques that may be applied to other types of carving. The 2 day seminar cost is \$70 plus the blank. The 1 day painting seminar is \$35 and includes brushes and paint. Student max 12

2AB	Mon, Tue	Carving Critters	\$70 + blank
2CD	Wed, Thu	Carving Critters	\$70 + blank
2E	Fri	Painting Critters	\$35, includes brushes & paint



CARTER, FRED



HEIRLOOM CHRISTMAS ORNAMENTS Skill Level: BIA

Fred is offering 4 days of carving and painting heirloom Christmas Ornaments and a cute snowman. We will carve for 3 days and paint for 1 day. The blanks cost \$5 to \$10. The 4 day seminar cost is \$140. Depending on your level of experience, you may be able to carve several ornaments before painting day. Fred will provide paint and brushes. Bring your standard hand tools. Obtain more information at: Cartercrafts@consolidated.net, or Fred at: 936.597.5339. Student max 12

3A-D Mon-Thu Christmas Ornaments/Snowman \$140 + blank



DEEGE, DALLAS



CARICATURE TECHNIQUES ON FACIAL EXPRESSIONS

Skill Level: Intermediate/Advanced

Dallas structures this 1 day Wednesday seminar with one on one instruction and some group lectures. During the seminar you will learn how to layout and carve a face out of a 1 1/2" x 1 1/2" x 5" block of wood. Please bring your carving safety glove, carving knife, palm tools, V tools and gouges.

This seminar will be extremely valuable for those interested in competing in contests. Dallas will share some of the secrets to winning a whittling contest.

Cost of the seminar is \$40. Blanks are \$2. Student max 12

4C Wed Caricature Techniques on Facial Expressions \$40 + blank



GOODSON, DYLAN



REALISTIC FIGURES or RELIEF SCENES Skill Level: BIA

REALISTIC FIGURES

Skill Level: BIA

The human figure project will be the Swordsman design shown, of which 25+ variations can be carved from this one roughout. The carving will be a 1/6 scale figure or about 12 inches tall. Pictured is the Viking Warrior variation. Please note that the picture is of a clay model that Dylan created during the design process. You'll have the opportunity during this seminar to learn about the uses of clay models in woodcarving, as well as: human anatomy, realistic carving techniques; sharpening, and safe and efficient carving methods.

RELIEF SCENES

Skill Level: BIA

The relief project will be the American Farmhouse design. It'll be carved from a roughout that is about 17" x 12" x 2". While carving this design you'll learn about compositional theory; perspective, compression of depth, layering and textures. Not to mention a heavy dose of carving the intricate detail that Dylan is known for.

Each project is a 5 day seminar and costs \$185. Roughouts are \$35 to \$55. Students will be carving using carving stands provided by Dylan and the student should bring mallet-size tools and a mallet for the seminar. Don't worry if you don't have many mallet-size tools, Dylan has some for loan. Other projects can be arranged with Dylan beforehand.

Dylan can be contacted at 256.496.6797 or by email at: dr_g@oldoakenterprises.com

Check his website www.oldoakenterprises.com or his studio's website:

www.rumblingwaterstudios.com to learn more about Dylan and to view his work. Student max 12

5A E Mon–Fri Realistic Figures or Relief Scene \$185 + blank



HALBROOK, CAROLYN



CHIP CARVING

Skill Level: BIA

Carolyn will be teaching 5 one-day Chip carving seminars for beginners, intermediate or advance students. Beginners will do a practice board to learn the proper way to hold the knife and learn many basic cuts, including four rosettes. There is a very large assortment of projects to choose from. Including small ornaments to boxes, clocks, plates of different sizes, kaleidoscopes, banana hangers and many more items, both functional and decorative. Lettering instructions are also available.

Projects come in various skill levels from beginner to advance. Instruction includes many group demonstrations, frequent one on one instruction and continual monitoring. It is recommended that students take two, three or more days of instruction, especially beginners or students working on large projects. Only one sharp knife is required to Chip Carve. A light may be helpful. Cost per day is \$35, blank cost varies

Visit Carolyn's website at: www.carolynsartworks.com or contact her at: jchalbrook@comcast.net. Carolyn also instructs at: www.carvinonline.com.

Student max 10

6A	Mon	Chip Carving	\$35/day + blank
6B	Tue	Chip Carving	\$35/day + blank
6C	Wed	Chip Carving	\$35/day + blank
6D	Thu	Chip Carving	\$35/day + blank
6E	Fri	Chip Carving	\$35/day + blank



DON HARTT



FANCY WALKING CANES

Skill Level: BIA

Don will be teaching 5, one day seminars. You will learn how to put on a fancy pattern, carve and finish a cane. The student can schedule from one to five days. Some of the patterns can be completed in two to three days, except for the complicated patterns which take a day or two longer. Extra blanks, with or without patterns are available for sale.

Tools required include: carving knives, and gouges. Bring your woodburner if you plan to use it on your cane. A background tool is available for \$15. Seminar cost is \$35 a day, blanks are \$40 to \$85.

Visit Don's website to see finished canes, blanks and various patterns at: www.donharttcanes.com. Email Don at: donhartt@gmail.com. Student max 12

7A	Mon	Fancy Canes	\$35/day + blank
7B	Tue	Fancy Canes	\$35/day + blank
7C	Wed	Fancy Canes	\$35/day + blank
7D	Thu	Fancy Canes	\$35/day + blank
7E	Fri	Fancy Canes	\$35/day + blank



MOORE, PAT



MOORE ROUGHOUT CHOICE

Skill Level: BIA

Pat will teach 5, one-day seminars carving any Moore roughout from "Moore Wood & Roughouts". Seminar cost per day is \$50, roughout costs vary. Choose from over 70 different designs, birds, animals, Santa's, Native Americans, etc. Pat will help you with any area you are struggling with, face features, eyes, hands, fur or feathers. Bring your questions, paper and pencil, a carving glove, your favorite sharp hand and palm carving tools (no power) and a light may be helpful. Project roughouts can be viewed

at: www.roughouts.com. Student max 12

8A	Mon	Moore Roughout of Choice	\$50 + blank
8B	Tue	Moore Roughout of Choice	\$50 + blank
8C	Wed	Moore Roughout of Choice	\$50 + blank
8D	Thu	Moore Roughout of Choice	\$50 + blank
8E	Fri	Moore Roughout of Choice	\$50 + blank



PERKINS, JOE



ANGEL ORNAMENT

Skill Level: B, I

Joe's project is a 2 piece Angel ornament out of Basswood. The wings are 2" x 4" and the body is 4" tall. This 2 day seminar will have the student carve the face, arms and a design for the wings. Only standard tools and a carving glove are required. Joe will furnish the bench hook, and mat. The seminar cost is \$35 and the blank is \$5. Student max 10

9AB	Mon - Tue	Angel Ornament	35 + blank
-----	-----------	----------------	------------



REB, DANNY



CHRIST THE KING

Skill Level: Intermediate/Advanced

Danny will be conducting a two day seminar on Monday and Tuesday, carving a face of Jesus on a triangle board. Sufficient wood for two faces and jewels will be supplied. If you are a fast carver you may be able to finish 2. Standard hand tools will be used. Blank and spray finish included. Seminar cost is \$70 and includes the blank. *Mounting plaques will be available for purchase.* Danny says it is time to return to the religious arts of our time. Join Danny for a great project and a fun

time of carving and fellowship. Student max 12

10AB Mon, Tue Christ the King \$70 seminar, 2 blanks included



REICHERT, WANDA



HAND CARVE AN 8" BLACK CRAPPIE (no power)

Skill Level: BIA

INTRODUCTION TO INTAGLIO

Skill Level: BIA

HAND CARVE AN 8" BLACK CRAPPIE (no power)

Wanda will teach a 3 day seminar, starting on Monday, carving an 8" Black Crappie using hand tools. (No power required) Wanda will bring her Ram and dust collector for small detail work, if needed. Scales may be carved or woodburned (need tips FSM & FL). The student will paint and mount the fish if time permits. Wanda will provide the fish kit & paint. You may bring your mount or purchase one from Wanda. Students will provide their own hand tools, paint brushes, and woodburner. Seminar cost \$100 includes blank and paint. Student max 12

11A-C Mon - Wed Black Crappie by Hand \$100 blank included

INTRODUCTION TO INTAGLIO

Wanda will teach a one day introduction to Intaglio carving on Thursday. The student will carve a simple pattern that can be carved in a day, but not painted. Wanda will supply the blank and patterns. You will need a safety glove, thumb guard, and other standard hand tools. This 1 day seminar cost \$50 and includes the blank. Student max 12

11D Thu Intro to Intaglio \$50 includes blank

Contact Wanda at: 903.532.5551 or safecarvingwanda@verizon.net.

11A-C Mon-Wed **Black Crappie by Hand \$100 includes blank**
 11D Thu **Introduction to Intaglio \$50 includes blank**



RUCKER, PATTY & ADAIR



CARVING & PAINTING SANTAS

Skill Level: BIA

WOODBURNING

Skill Level: BIA

CARVE & PAINT A SANTA WITH ADAIR AND PATTY

This will be a full 5 days with Patty and Adair. You will carve with Adair for three days, carving a Santa of your choice from their roughouts. From their website: www.christmascarvingsetc.com, go to the "Seminar" link and scroll to the bottom to see the available Santas. Call Adair at 512.557.238 to reserve one or select one at the seminar. Adair teaches a simple way to carve faces and eyes. After completing your Santa carving with Adair, Patty will step in with two days of painting the Santa's. Patty teaches painting in thin layers of color to add to the beauty of the Santa. She will also demonstrate how to decorate in patterns to make the Santa special. The Rucker's will provide all the painting supplies. Bring a light for painting. Only standard knives and gouges are required. Student max 10
 Blank cost varies from \$21 to \$38.

Cost of the 5 day seminar is \$175 + blank

12A-E Mon-Fri Carve and Paint a Santa (Adair & Patty) \$175 + blank

WOODBURNING WITH PATTY

Patty is offering 3, one day woodburning seminars on Monday, Tuesday and Wednesday. A demo at the beginning will demonstrate the various styles of wood burning and how to use the different techniques to the best advantage. One style demonstrated will be a soft shading technique to obtain a photo realistic image. However, any style of woodburning is welcome. She will supply everything needed for the seminar except the woodburner, tips and light. You will need to bring a woodburner, tips and a light. Patty will supply the practice panels, transfer paper and patterns. She also has a few woodburners to lend. Call Patty at 512.557.2384 to reserve a woodburner. Student may select from one to 3 days. Seminar cost is \$35 a day and includes the practice board. Patty has art seminars at: www.carvinonline.com. Student max 10

- 13A Mon Woodburning (Patty) Cost \$35 / day
- 13B Tue Woodburning (Patty) Cost \$35 / day
- 13C Wed Woodburning (Patty) Cost \$35 / day

CARVING A SANTA WITH ADAIR

Adair will teach two, 1 day seminars on Thursday and Friday carving a Santa of your choice from his roughouts. Adair has a wide variety of roughouts to select from or carve an ornament or Santa candle

from a stick. View their roughouts at: www.christmascarvingsetc.com, go to the "Seminar" link and scroll to the bottom to see the available Santas. Call Adair at 512.557.2384 to reserve a blank or select one at the seminar. Students may select one or both days. Standard hand tools/gouges and a knife are required. *Note: Adair may have a 1, 2 or 3 day opening in his Monday, Tuesday or Wednesday seminar.* Check with Adair on Monday at the start of the event. Cost of seminar is \$35 a day, blanks vary from \$21 to \$38. Student max 10

13D Thu Carving a Santa (Adair) Cost \$35 / day
13E Fri Carving a Santa (Adair) Cost \$35./day

Check out their work at: www.christmascarvingsetc.com. Patty's email is Pattyadair@grandecom.net

12A-E	Mon-Fri	Carve and Paint Santa (Adair & Patty)	\$175+blank
13A	Mon	Woodburning (Patty)	\$35 / day+blank
13B	Tue	Woodburning (Patty)	\$35 / day+ blank
13C	Wed	Woodburning (Patty)	\$35 / day+ blank
13D	Thu	Carve a Santa (Adair)	\$35 / day+ blank
13E	Fri	Carve a Santa (Adair)	\$35 / day+ blank



SARFF, TOM



BASIC CARVING

Skill Level: Beginner

CARVING A COWBOY BUST

Skill Level: Beginner

BASIC CARVING (for beginners)

Tom will teach his basic, two day, beginning Carving seminar on Monday and Tuesday. This is a super seminar, and a must, if you are just getting started in carving or have carved for only a short time. Tom will teach you the basics and help you do several small projects. He asks that you bring a knife and a glove if you have one or bring what you have. You can borrow all the tools from Tom that you need. Bring paper and pencil to take notes. For those first-time carvers *ONLY*, the Guild will pay for this seminar (\$15). Blanks are provided. Student max 10

14AB Mon - Tue Basic carving \$15 blank included

CARVING A COWBOY BUST (faces for beginners)

Skill Level: Beginner

Tom will also teach a two day seminar on Wednesday and Thursday of a Cowboy Bust (Caricature).

Tom will help you do basic face setup, eyes, ears, nose and mouth. Tom asks that you bring all the carving tools you have. You can borrow tools from Tom. The blank will be provided. Don't be fooled by the cost, this is an excellent seminar. Student max 6

14CD	Wed - Thu	Cowboy bust	\$15 blank included
14AB	Mon - Tue	Basic Carving	\$15 blank included
14CD	Wed - Thu	Cowboy Bust	\$15 blank included



SOLBERG, C. J.



GNOME Skill Level: BIA
CARICATURE SANTA
 Skill Level: BIA

GNOME

C.J maintains a house is not a home without a gnome. So why not carve one. This Gnome is 5 inches tall and carries a candle to brighten his way. We will carve him in the traditional flat plane style. Participants will need to have an interest in the Scandinavian flat plane carving style, a good sharp knife, and a safety glove. Oh, and don't forget the Ole and Lena jokes! Seminar cost \$90 includes blank. Student max 10

CARICATURE SANTA

In this 2 day seminar, we will hand carve a caricature Santa, paint with love, sign and gift wrap. All you'll need to add is the Christmas tree to put it under. This shelf-ready Santa bust is 5x3 inches of cuteness. We will complete the carving the first day and paint, sign and wrap on day 2. Participants need to bring a good sharp knife and a safety glove. This carving is done with just a knife, but you may bring your steamer trunk full of tools if you must. Contact C. J. at: cjsolberg@gmail.com. Seminar cost \$90 includes blank

Christmas cookies are welcome! Student max 10



15AB Mon, Tue	Gnome	\$90 includes blank
15DE Thu, Fri	Caricature Santa	\$90 includes blank

STETSON, DAVE



CARICATURE CARVING-Choice of project

Skill Level: BIA

Dave will be teaching a two day and a three day caricature carving seminar. He will teach from a variety of roughouts and cut outs. The two day seminar, Monday, and Tuesday will focus on the head, face and expression. Carving bottle stoppers will be an option. Seminar cost for the 2 days \$90, Blanks vary from \$2 to \$35. Student max 12

The three day seminar, Wednesday, Thursday and Friday will provide more time for the full figure. The 3 day seminar cost \$135, Blanks vary from \$2 to \$35. Student max 12

Dave's website is: www.stetsoncarving.com and he is an instructor at: www.carvinonline.com. For more information call Dave at 480.216.9795. Or email at: lcnmichele@aol.com.

16AB	Mon - Tue	Choice of Roughout	\$90 + blank
16C-E	Wed - Fri	Choice of Roughout	\$135 + blank



STEWART, JIMMY



CARVING DOGS

Skill Level: BIA

CARVING THE HUMAN HEAD

Skill Level: BIA

Jimmy is offering a 1 day seminar carving a dog. Some of the popular breeds are: Collie, Scottie, English Bulldog, Poodle, Beagle, English Setter, German Shepard and Doberman Pincher. We will starting with a blank about 3 to 3 1/2" tall. The 1 day seminar on Monday costs \$20 and includes the blank. Student max 12

17A	Mon	Carving Dogs	\$20 includes blank
------------	------------	---------------------	----------------------------

CARVING THE HUMAN HEAD

Jimmy is also teaching a 2 day seminar on Wednesday and Thursday carving the human head. Emphasis will be on shape and proportion. In-depth study will concentrate on eyes, ears, noses, and the mouth. Differences between male and female facial features will be discussed, along with life like and caricature differences. This 2 day seminar on Wednesday and Thursday costs \$40 and includes the blank and practice pieces. Student max 12

17CD	Wed, Thu	Human Head	\$40 includes blank
-------------	-----------------	-------------------	----------------------------

POWER CARVING SEMINARS & INSTRUCTORS

KILLIAN, BILL



POWER CARVE A 10" Crappie

Skill Level: BIA

Carve a 10" Crappie with Bill Killian. This power carving seminar length is 5 days. If time permits you may paint the finished piece. Instructor will provide the blank and eyes. Again, this is a power carving seminar and the students must provide their own Foredom type power carver, approved dust collector, bits and burrs, woodburner, paint brushes, light and power strip. Instructor will provide paint. Cost for the 5 day power carving seminar is \$250 and includes the blank.

Questions concerning this project? Give Bill a call at 254-848-4618, or email: bkillian@hot.rr.com. Student max is 6

18A-E

Mon-Fri

Power Carve a Crappie

\$250 includes blank



VAUGHN, GEORGE



CARVE A HIBISCUS FLOWER & A RUBY THROATED HUMMINGBIRD

Skill Level: BIA

This power carving seminar length is 5 days. The participant will carve the flower and humming bird. We will paint if time permits. Blanks will be tupelo wood, which is an excellent wood for power carving and accepting detail. Come prepared to have a great week of carving as this will be a fun and exciting project. Paint, reference material, study go by and a blank are included in the seminar fee.

Student must supply their own approved dust collector, Foredom type power carver, Ram type micro motor for the detail, a woodburner, task light and paint brushes. Seminar cost is \$175 and includes the blank. Student max 8

Questions? Contact George at: carvingtools@icloud.com or 432.553.5996.

19A-E

Mon-Fri

Hibiscus & Humming bird

\$175 blank included

NON CARVING INSTRUCTORS

STEWART, CAL

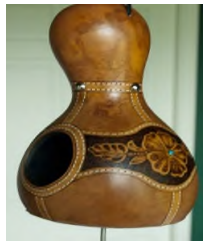


THUNDER GOURD

Skill Level: BIA

Join Cal in this 3 day seminar Monday, Tuesday and Wednesday making a Thunder Gourd. The seminar cost is \$90 with Cal supplying the Gourd, spring, membrane, dyes and patterns. Student must supply a woodburner, pens, (small and large skew), spear tip and shading tips. Any questions contact Cal at: caldstewart@yahoo.com. Student max 6

51A-C Mon-Wed Thunder Gourd \$90, includes blank



ADVERTISING

Any advertisements you would like placed in the **TEXAS CARVER** should be sent to: Don Stutsman, 400 County Road, Moran, TX 76464, Phone: 210-241-1727, E-mail stutsmd@1791.com OR Stan Richard, 3246 Bending Creek, San Antonio, TX 78261 Phone: 830-980-3384
Email: srichard4@satx.rr.com

Current Rates (per issue):

1/3 Page Ads - \$30, 1/2 Page Ads - \$50, Full Page Ads - \$100

SEMINAR LISTING

Sem #	Instructor	Skill	Cost	Project	M	T	W	T	F
1DE	Batte, Gary	I-A	\$90+	Christmas Shelf Elf				X	X
2AB	Borg, David	B-I-A	\$70+	Dragons & Critters	X	X			
2CD	Borg, David	B-I-A	\$70+	Dragons & Critters			X	X	
2E	Borg, David	B-I-A	\$35	Painting Class					X
3A-D	Carter, Fred	B-I-A	\$140+	Heirloom Christmas Ornaments	X	X	X	X	
4C	Deege, Dallas	I-A	\$40+	Caricature Facial Expressions			X		
5A-E	Goodson, Dylan	B-I-A	\$185+	Realistic Figures or Relief Scenes	X	X	X	X	X
6A	Halbrook, Carolyn	B-I-A	\$35+	Chip Carved Projects	X				
6B	Halbrook, Carolyn	B-I-A	\$35+	Chip Carved Projects		X			
6C	Halbrook, Carolyn	B-I-A	\$35+	Chip Carved Projects			X		
6D	Halbrook, Carolyn	B-I-A	\$35+	Chip Carved Projects				X	
6E	Halbrook, Carolyn	B-I-A	\$35+	Chip Carved Projects					X
7A	Hartt, Don	B-I-A	\$35+	Fancy Canes	X				
7B	Hartt, Don	B-I-A	\$35+	Fancy Canes		X			
7C	Hartt, Don	B-I-A	\$35+	Fancy Canes			X		
7D	Hartt, Don	B-I-A	\$35+	Fancy Canes				X	
7E	Hartt, Don	B-I-A	\$35+	Fancy Canes					X
8A	Moore, Pat	B-I-A	\$50+	Moore Roughout Choice	X				
8B	Moore, Pat	B-I-A	\$50+	Moore Roughout Choice		X			
8C	Moore, Pat	B-I-A	\$50+	Moore Roughout Choice			X		
8D	Moore, Pat	B-I-A	\$50+	Moore Roughout Choice				X	
8E	Moore, Pat	B-I-A	\$50+	Moore Roughout Choice					X
9AB	Perkins, Joe	B-I	\$35+	Angel Ornament	X	X			
10AB	Reb, Danny	I-A	\$70	Christ the King	X	X			
11A-c	Reichert, Wanda	B-I-A	\$100	Hand Carved 8" Black Crappie	X	X	X		
11D	Reichert, Wanda	B-I-A	\$50	Relief or Intaglio				X	
12A-E	Rucker, Adair	B-I-A	\$175+	Carving & Painting Santa	X	X	X	X	X
13A	Rucker Patty	B-I-A	\$35+	Woodburning	X				
13B	Rucker Patty	B-I-A	\$35+	Woodburning		X			
13C	Rucker Patty	B-I-A	\$35+	Woodburning			X		

2015 Texas State Championship Show Registration

Electronic Registration is available and preferred. Access the Guild Website (www.texaswoodcarversguild.com). If you are unable to register online... Print, fill in form below and mail to the following address: Larry Miller 2204 High Meadow Dr. Denton, TX 76208

Show is held at New Braunfels Civic Center, New Braunfels, Texas. All Show Tables are 6' x 30".

"Exhibition" and "Club" tables are available. Exhibition Tables are \$30 each and Show Entries coming from these tables are at no charge. Club Tables are no-charge for first table and \$30 for each additional table. Show entries coming from Club Tables are \$5.00 per entry (see Show Rules for additional information). TWG Show Set-up begins Friday (OCT 16th) approximately 5:45 – 7:00 PM and Saturday 7:00 – 9:00 AM.

Questions can be directed to Jon Zubkus - Show Chairman Phone: 512-793-2501

Email: jazubkus@att.net

Show Registration Form

Name _____ Address _____

City _____ State _____ Zip _____ Phone _____

EMAIL _____

Exhibition Tables needed @ \$30 each _____ Club Tables required (first is free, additional @\$30)

Total enclosed _____

Registration must be received by **September 1, 2014**

SIGNATURE IS REQUIRED ON ENTRY FORM AND INDICATES PARTY AGREES TO TWG SHOW RULES AND AGREES THAT ANY REPRESENTATIVE OF TWG, IT'S OFFICERS, BOARD OF DIRECTORS, TWG MEMBERS OR NEW BRAUNFELS CIVIC CENTER OR ITS EMPLOYEES WILL NOT BE HELD RESPONSIBLE FOR ANY LOSS, DAMAGE, OR INJURY OCCURRING DURING THE *TEXAS WOODCARVERS GUILD'S TEXAS STATE CHAMPIONSHIP SHOW*

Signature _____

Texas Woodcarvers Guild

13118 Boomer Lane

Austin, TX 78729